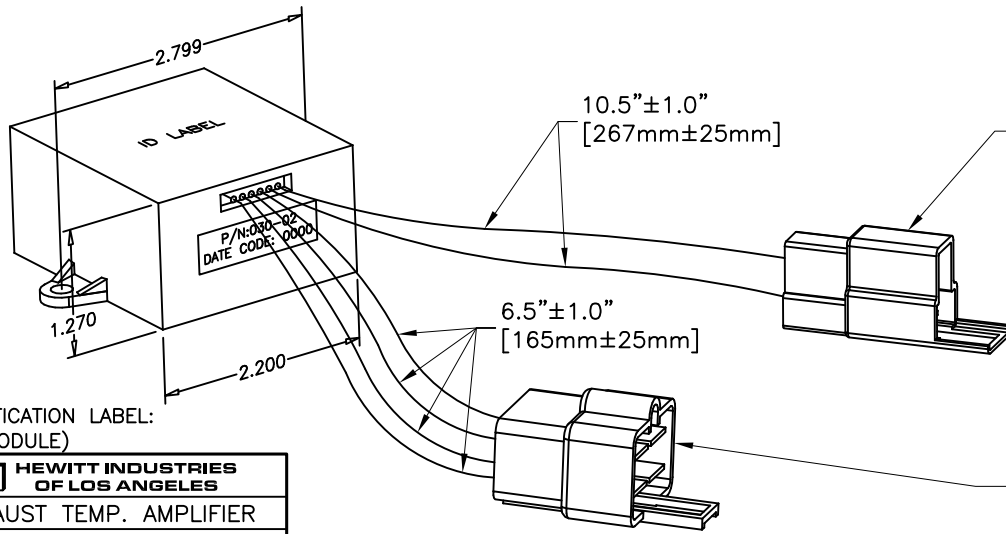
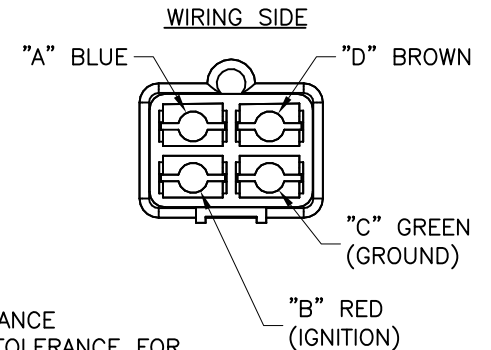
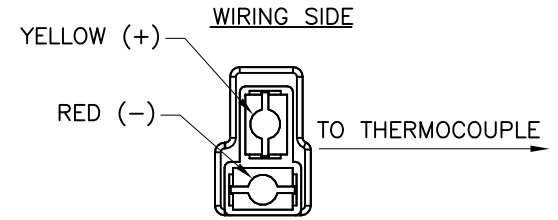


PART NO. 030-026



CONNECTOR  
P/N 712-557  
PAC# 2973782  
TERMINAL (2X)  
P/N 712-041  
PAC# 2965481

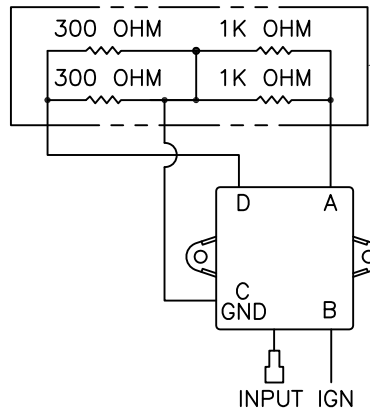
CONNECTOR  
P/N 712-576  
PAC# 2977049  
TERMINAL (4X)  
P/N 712-041  
PAC# 2965481



IDENTIFICATION LABEL:  
(ON MODULE)

<b>HEWITT INDUSTRIES OF LOS ANGELES</b>	
EXHAUST TEMP. AMPLIFIER	
HEWITT PART NO. 030-026 NAVISTAR PART NO. 577294C92	
2-WAY CONNECTOR	
THERMOCOUPLE (+)	YELLOW
THERMOCOUPLE (-)	RED
4-WAY CONNECTOR	
GROUND	GREEN
IGNITION	RED
"A"	BLUE
"D"	BROWN
WARNING: IMPROPER INSTALLATION WILL DAMAGE MODULE AND VOID WARRANTY	

**TEST CONFIGURATION:**



SIMULATED LOAD RESISTANCE  
(RESISTORS 1/2W, 1% TOLERANCE FOR  
AMPLIFIER TEST PURPOSES ONLY.  
ACTUAL GAUGE RESISTANCE MAY VARY)

**MATERIAL:**

1. CASE: ABS PLASTIC; COLOR: BLACK.
2. CONNECTOR BODIES: POLYPROPYLENE  
COLOR: 4 CONTACT TYPE: CLEAR  
2 CONTACT TYPE: CLEAR
3. ALL WIRES ARE 18 AWG. STRANDED. REFER TO ABOVE DRAWING FOR WIRES LENGTHS.  
TEMPERATURE RANGE: -40°C TO +120°C  
INSULATION: CROSS-LINKED POLYETHYLENE.

TEST		
TEMP. REF.	INPUT VOLTAGE (MV) ±.05*	OUTPUT VOLTAGE AT "D" VOLTS ±.15 (REF TO GND)
300 °F	5.25	0.15
600 °F	12.02	1.60
900 °F	19.05	3.10
1200 °F	26.14	4.60
1500 °F	33.09	6.10

**NOTES:**

1. \* INPUT VOLTAGE ASSUMES REFERENCE JUNCTION TEMPERATURE OF 70°F USING TYPE "K" THERMOCOUPLE.
2. REFERENCE VOLTAGE "A" = 8.1 ± 0.5 VOLT. REFERENCE TO GROUND.
3. UNDER OPEN CIRCUIT CONDITIONS (THERMOCOUPLE INPUT), AMP OUTPUT WILL PRODUCE FULL SCALE GAUGE READING.

B

REVISIONS					TOLERANCES			
REV.	DESCRIPTION	EO#	DATE	BY	UNLESS OTHERWISE SPECIFIED:			
A	UPDATE DRAWING IN CAD	-	06/07/05	JA	DIMENSIONS ARE IN INCHES, METRIC EQUIVALENTS ARE IN [BRACKETS]: .X = .030 [0.76] .XX = .010 [0.25] .XXX = .005 [0.13] FRACTIONS = 1/32 ANGLES = ±1°		TITLE: EXHAUST TEMP. AMPLIFIER	
B	REVISED BY ECO	ECO 637	08/01/13	JAG			DRAWN BY: J.A. PART NO. 030-026	
					SCALE: NONE		APPR. BY: DATE: 06/07/05 SHEET 1 OF 1	