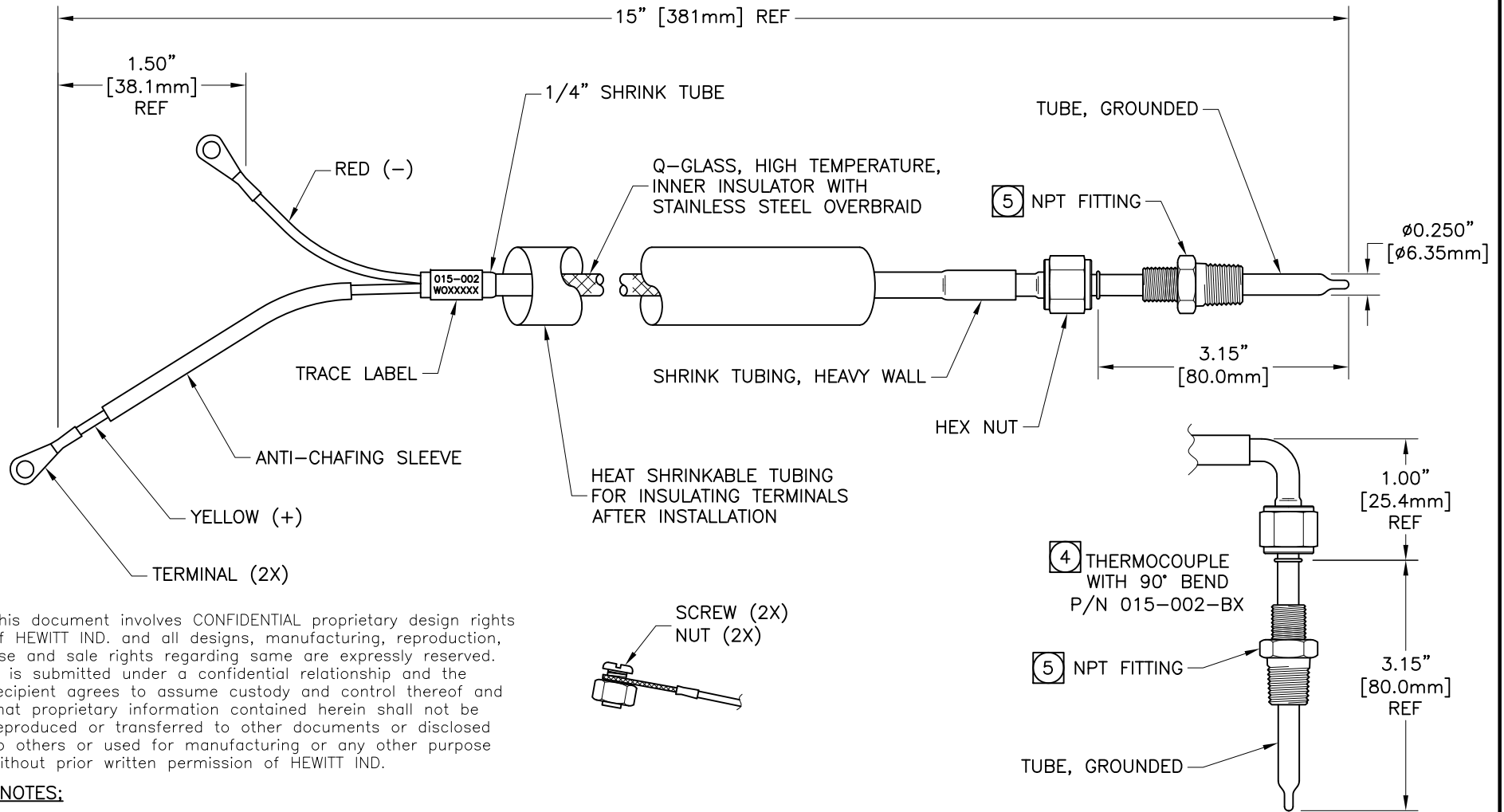


FOR CUSTOMER DRAWING
 NO. 015-002-X C

PART NO.	FITTING ON TUBE (5)
015-002	1/4" NPT
015-002-1	1/8" NPT

PART NO. (WITH BEND) (4)	FITTING ON TUBE (5)
015-002-B	1/4" NPT
015-002-B1	1/8" NPT

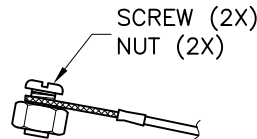


This document involves CONFIDENTIAL proprietary design rights of HEWITT IND. and all designs, manufacturing, reproduction, use and sale rights regarding same are expressly reserved. It is submitted under a confidential relationship and the recipient agrees to assume custody and control thereof and that proprietary information contained herein shall not be reproduced or transferred to other documents or disclosed to others or used for manufacturing or any other purpose without prior written permission of HEWITT IND.

NOTES:

1. TYPE "K" (CHROMEL/ALUMEL) THERMOCOUPLE.
2. TUBE MATERIAL: INCOLOY.
3. HOT JUNCTION: GROUNDED.

- (4) ADD "B" TO PART NUMBER TO INDICATE A 90° BEND IN TUBE. (SEE TABLE)
- (5) 1/4" NPT AND 1/8" NPT FITTINGS AVAILABLE. (SEE TABLE)



REVISIONS				
REV.	DESCRIPTION	EO#	DATE	BY

TOLERANCES
UNLESS OTHERWISE SPECIFIED:
DIMENSIONS ARE IN INCHES, METRIC EQUIVALENTS ARE IN [BRACKETS]:
.X = .030 [0.76]
.XX = .010 [0.25]
.XXX = .005 [0.13]
FRACTIONS = 1/32
ANGLES = ±1°
SCALE: NONE

HI HEWITT INDUSTRIES OF LOS ANGELES

TITLE: THERMOCOUPLE

DRAWN BY: JAG PART NO. 015-002-X

APPR. BY: SHEET 1 OF 1

DATE: 07/30/14